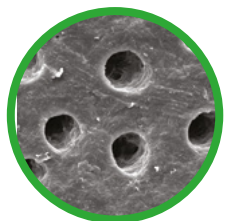


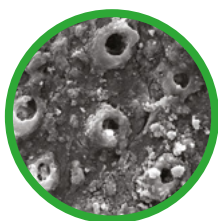
Key Benefits of BioMin Toothpaste

Dentine tubules occluded with either **BioMin® F** or **BioMin® C** are shown to be resistant to attack from acidic food and beverages, however **BioMin F** does provide superior protection.

Unique, continuous low level delivery of mineral ions for up to 12 hours.



Electron Micrograph Showing
Open Dentinal Tubules



BioMin® F Forming Apatite
Inside Dentinal Tubules

BioMin toothpaste products have been developed to combat sensitivity when used regularly to the prescribed instructions.

Why Choose BioMin Toothpaste?

There are many fantastic reasons to brush with BioMin toothpaste products.

Naturally brilliant, BioMin toothpaste replicates and works in harmony with the processes that already take place in your mouth, delivering greater protection of sensitive areas and peace of mind.

BioMin® particles are designed to adhere to the tooth surfaces after brushing slowly releasing mineral ions to occlude open tubuli and provide relief from sensitive stimuli.

Food for thought: BioMin toothpastes work faster in acidic conditions and gives added protection, so there's less need to worry about what you're consuming.

BioMin toothpastes are available here:

www.biomin.co.uk

BioMin®

Armour for Teeth



Clinically proven to provide sensitivity relief and protection



How to Use BioMin Toothpaste

Brush with BioMin toothpaste twice daily
(before breakfast and last thing at night)
to help protect from and relieve
dentine hypersensitivity.

Apply a 1cm long bead of toothpaste
to your toothbrush. Brush all surfaces of your
teeth using short and gentle brush strokes,
be sure to pay extra attention to any
hard-to-reach areas. After two minutes of
brushing, swirl the foamy toothpaste around
your mouth for 30 seconds, and spit out the
excess into the sink.

Avoid rinsing your mouth out with water!

(Rinsing washes away the active ingredients
of the toothpaste often before they have had
a chance to work).

*Don't drink (or eat) anything acidic for at least
30 minutes after brushing otherwise it'll undo
much of your good work!*

FLUORIDE TOOTHPASTE



BioMin® F

The award winning formula used in
BioMin® F toothpaste slowly releases
Calcium, Phosphate and Fluoride ions over a
period of up to 12 hours after brushing. These
ions combine to form more acid resistant
fluorapatite.

BioMin F toothpaste mimics and enhances
the way saliva replaces lost mineral on tooth
surfaces to reduce the risk of sensitivity.

FLUORIDE FREE TOOTHPASTE



BioMin® C

BioMin® C the Fluoride free daily toothpaste
formulated to adhere to the tooth surface
after brushing and slowly release Calcium
and Phosphate ions in a similar manner
to **BioMin F** rapidly producing an
hydroxapatite coating to provide
protection against sensitivity.

Ideal for those who do not wish to use
a Fluoride containing toothpaste.